

Who is Leech Lake Band of Ojibwe?

Sovereign Tribal Government working for its' people

LEECH LAKE BAND OF OJIBWE

- Rural community
- 864,158 acres
- 50% + is water/wetlands
- 713 miles of rivers/streams
- 270 fishable lakes,
40 wildrice lakes
- Serving 9,000 in 11
communities

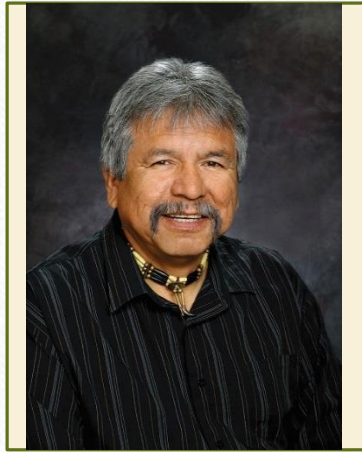




The Leech Lake Band Of Ojibwe is committed to the responsible operation of our government, preserving our heritage, protecting our sovereign rights, spiritual beliefs, and natural resources for our Elders and present and future generations, while enhancing the health, economic well-being, education, and our inherent right to live as Ojibwe people.

Leech Lake Tribal Council

Chairman:	Faron Jackson
Secretary/Treasurer:	Arthur LaRose
District I Representative:	Robbie Howe
District II Representative:	Steve White
District III Representative:	LeRoy Staples Fairbanks



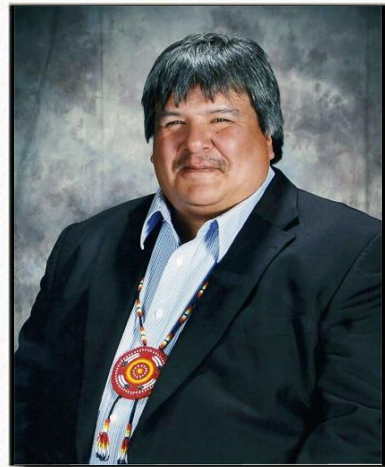
Chairperson
Faron Jackson, Sr.



Secretary / Treasurer
Arthur LaRose



District I Representative
Robbie Howe



District II Representative
Steve White



District III Representative
LeRoy Staples Fairbanks

What do we have that
makes us care about
energy?

People

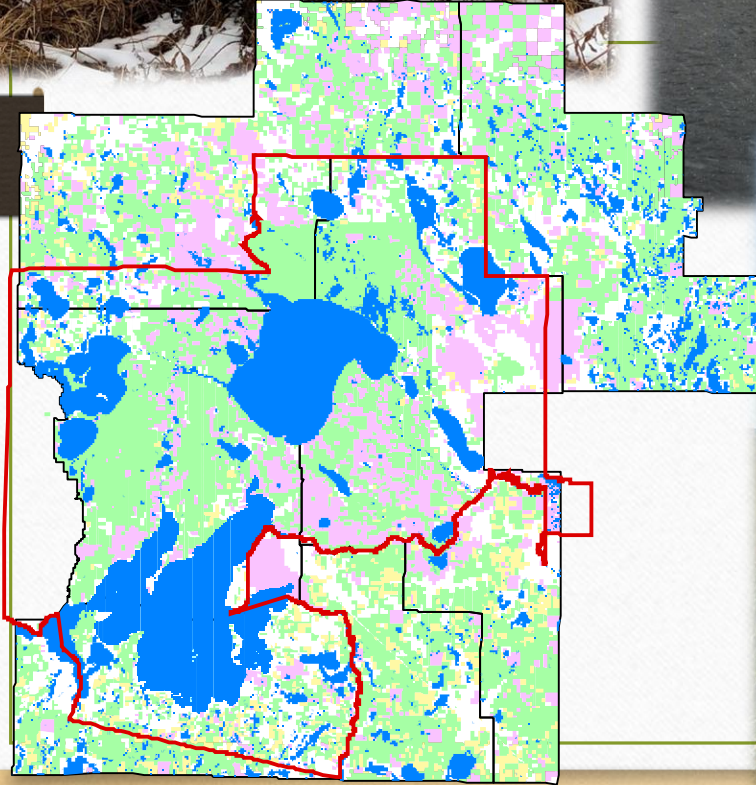
- Population: 9,509 enrolled members
- BIA workforce stats state 8,875 Indians eligible for BIA services on the Reservation
 - (LL, other MCT members, Red Lake, and other tribal nations combined)

Household Incomes:

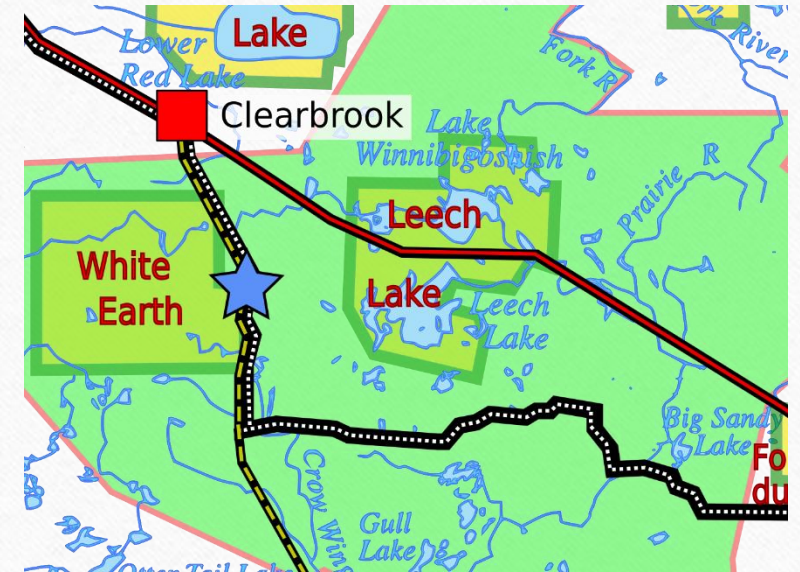
- <\$5,000: 11.2%
- \$5,000-\$19,999: 25.9%
- \$20,000 to \$34,999: 20%
- \$35,000 to \$49,999: 17%
- \$50,000 to \$79,999: 16%
- \$80,000-\$109,999: 4%



Resources

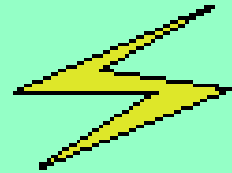


Energy Corridor



Pipelines – Natural gas & Petroleum
Energy – 230KW Highline
Railway

ENERGY BILLS



ELECTRIC COMPANY

P.O. BOX 123, Anytown, USA

ACCOUNT NUMBER		ACCOUNT NAME		RATE	CYCLE	SERVICE ADDRESS		
1234560		Jones, Bob		5	708	123 Main Street		
SERVICE PERIOD FROM	TO	NO. DAYS	BILL TYPE	METER READING PREVIOUS PRESENT		MULTIPLIER	kWh USAGE	\$ AMOUNT
08/13	09/11	29	0	96434 98114		1		
BASE CHARGE							1680	10.00
ENERGY CHARGE								134.47
FUEL COST ADJUSTMENT: (\$0.005)								8.40
SALES TAX - STATE								5.78
SALES TAX - SPECIAL								1.44
TOTAL AMOUNT DUE								160.09



LLBO Energy Baseline



82
Tribal facilities



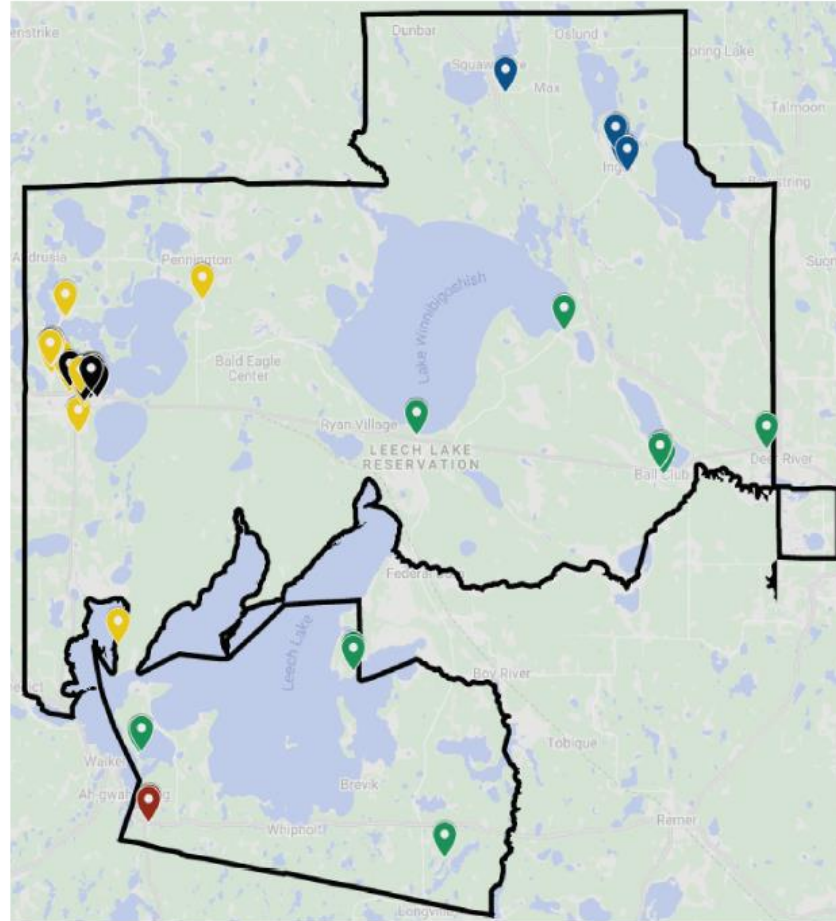
5
electric utilities on
Reservation



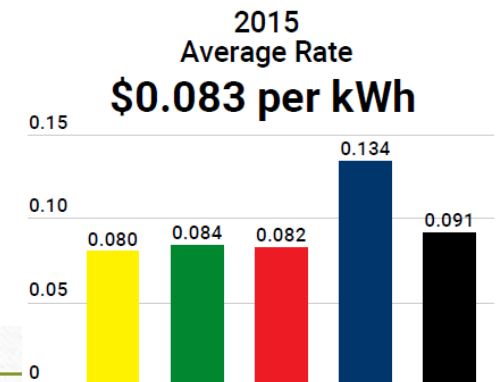
\$1,740,000
annual electric cost



8.3 cents/kWh
average electric rate



- Beltrami Electric Cooperative
- Lake Country Power
- Minnesota Power
- North Itasca Electric Cooperative
- Otter Tail Power Company



\$/kWh

Based on who we are and what we have what are our priorities for energy?

- Work for our people – energy assistance & availability
- Work for a future with the same resources available for our children
 - Climate Change?
 - Pipelines?
- Work in ways that reflect our values as Anishinaabe
 - Take care of the Lands and Manoomin and they will care for us
- PRIORITIES ADD UP TO USING LESS ENERGY
 - Government & Citizens



Past Energy Projects

2010-17



- Wind Feasibility Study
- Solar Furnaces at Government Buildings

2017



- Tribal Greenstep Nations Program - Step 2
- 200 kW of Solar PV Installed across 5 Facilities

2018



- Guaranteed Energy Savings Program - Solar PV Installed
- **Solar Master Plan**
- Residential Solar Furnaces
- Electric Vehicle Charging Stations

2019



- Guaranteed Energy Savings Program - Retrofits

2020



- **Policy Development: Solar-ready, EV, Net Zero**
- Strategic Energy Plan
- Tribal Utility Feasibility Study
- **DOE Solar Grant Application**

Ongoing



- Construction Rebates
- Sol Smart Tribal Recognition
- LLBO Green Team
- Sustainable Energy Coordinator

Guaranteed Energy Savings Program (GESP)

Program with MN DEPT OF
COMMERCE

Savings from retrofits pay back initial loan

Vetted Process

3rd Party Review (DOC)

- 3.8 Million Dollar investment in 22 government buildings
 - Mechanical upgrades
 - Control system upgrades
 - LED lighting upgrades
 - Water Conservation
 - Utility Related Measures
 - Solar Photovoltaics
- 265,162\$ guaranteed payback per year w/ 12.5yr payback timeline
 - 3.6 million Lbs. CO2 per year
- 1st year reporting shows:
 - Greater savings than anticipated





EV Charger Operational at Newly Opened Cedar Lakes Casino

By Kayla Duoos



Cass Lake – The first electric vehicle charger is officially up and running at the newly opened Cedar Lakes.





SOLAR PV

200 kw in partnership
with RREAL

Prescott, Tribal College,
Jackson Village, Palace, RREAL



- First garden to serve low income, energy assistance in Indian Country
 - ~ \$26,000/year to assist the underserved or additional families
- Funded via state Legislative-Citizen Commission on Minnesota Resources (LCCMR) and many non-profits
- Leading the way for more installations, possibly for the working poor
 - Government Center, Northern Lights



LEECH LAKE BAND OF OJIBWE COMMUNITY SOLAR PROJECT

This is a project made up of five 40kiloWatt solar installations. All of the monetary benefits gained from this array will go back into Leech Lake Energy Assistance and be given to energy assistance subscribers. This is the first 100% low-income community solar array, and this model will be replicated by RREAL across the United States. Thank you to all of our partners that helped make this impactful array happen!

Financer/Developer



Funds &
develop solar
project

LLBO, RREAL, LCCMR, Initiative
Foundation, Bush Foundation,
Headwaters Foundation, McKnight
Foundation

Solar Array



Prescott Community Center, Palace
Casino, RREAL, Jackson Village,
Leech Lake Tribal College

Revenue

Energy Assistance Provider



Leech Lake Energy Assistance

Identifies Energy
Assistance recipients

Beneficiary



Energy assistance subscribers

JACKSON
VILLAGE

4

PRESCOTT
COMMUNITY
CENTER

1

PALACE CASINO

3

LEECH LAKE
TRIBAL
COLLEGE

5

2

RREAL-
BACKUS

Present Situation

- Past energy projects have been successful
 - Focused on efficiency and customer-sited renewables
- What is the next phase of energy planning and development?
 - This is the key questions LLBO hopes to answer
- Now is the time for LLBO to formulate a plan to evaluate landscape
 - Aggressive renewable goals: States, Utilities, and Corporations
 - Untapped renewable resources
 - Transmission constraints
 - Low interest rates
 - Upcoming infrastructure funding